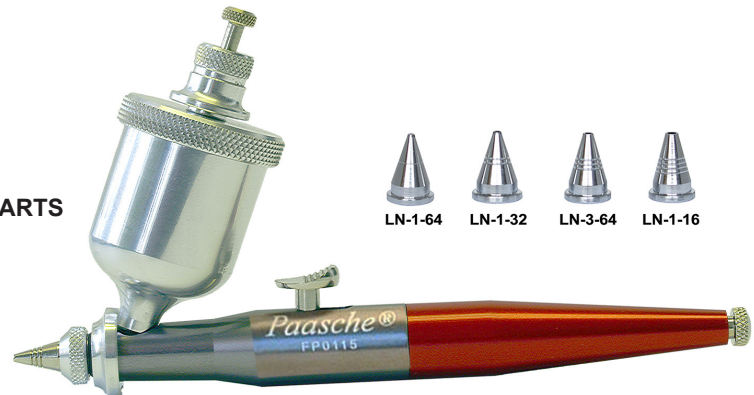


Paasche®

FP-4P (Pressure Fed) Flow Pencil

OPERATING INSTRUCTIONS & REPLACEMENT PARTS



Comes with LN-1/32 (Assembled) and LN-1/64, 3/64, and 1/16 Nibs loose
Total Length of Flow Pencil is 5 -1/2 inches.

INTRODUCTION:

The **FP-4P Flow Pencil** is used extensively by Cake Artists, Bakers, and Home Bakers to decorate their Cakes, Cupcakes, Cookies, etc. The Flow Pencil is easy to control and operate.

MIXING :

1. Proper mixing of Royal Icing & Butter Cream is essential for continuous and uninterrupted flow.
2. Experiment with thinning of Icing for best flow.
3. Do not mix Icing in cup of Flow Pencil, use a separate container and pour into cup only when Icing is at proper consistency.

LOADING ICING: (Tighten adjusting screw at rear of flow pencil before loading Icing)

1. Remove **FP-5 Cover**, and pour premixed Icing into cup 3/4 full, Hold lid firmly and push plunger into cup, Pressure will build and plunger will rise, thread lid onto cup.
2. Turning the **MU-72 Adjusting Screw** will control the movement of the **MU-65 Finger Lever Assembly** which controls the flow of Icing.

OPERATION:

1. Hold the **FP-4P Flow Pencil** in your hand as you would a pencil or brush and place your finger lightly over the **MU-65 Finger Lever**. When ready to begin piping, pull back on the **MU-65 Finger Lever**, when the icing begins to flow raise the pencil up and pull in a backward motion off the surface slightly.
2. Regulate the flow to the desired feed rate by turning **MU-72 Adjusting Screw**.
3. When the plunger gets closer to the cap the flow rate will slow down.
4. Practice on a Cake board before working on a actual cake.

WARNING: Follow all safety precautions.

CAUTION: Never point flow pencil at face when pressurized.

5. Correct adjustment of controls and skill of operation will result in uninterrupted and continuous piping.

CARE AND CLEANING:

1. Before storing **FP-4P Flow Pencil** clean it thoroughly. Rinse cup and lid in hot water to clean out Icing, remove nib and clean in hot water, wipe dry.
2. **MU-49L Needle** is held in position by **MU-57 Needle Chuck** and **VL-141 Locknut**. Remove the needle by unscrewing the **MU-71 Handle** and removing the spring. Loosen the **VL-141 Locknut** and then remove the needle for cleaning.

ADJUSTING OR REPLACING WORN PACKING WASHER:

1. If **PTFE Packing-#6** becomes worn or loose it must be tightened or replaced.
2. You will need a small screwdriver to remove or tighten the **Packing Nut**.
3. When replacing your **PTFE Packing** press **Packing** onto the **Packing Nut-#6**. Use a small screwdriver to tighten packing nut into shell until it is tight then back out one-half turn, may vary.
4. Now insert needle - you should feel a slight resistance. If too loose or too tight adjust the **Packing Nut** with screwdriver until you feel some slight resistance.
5. Now completely re-assemble guts of Flow Pencil.

CAUTION: OVER TIGHTENING CUP WILL CAUSE TRIGGER TO MALFUNCTION.

Paasche Airbrush Company

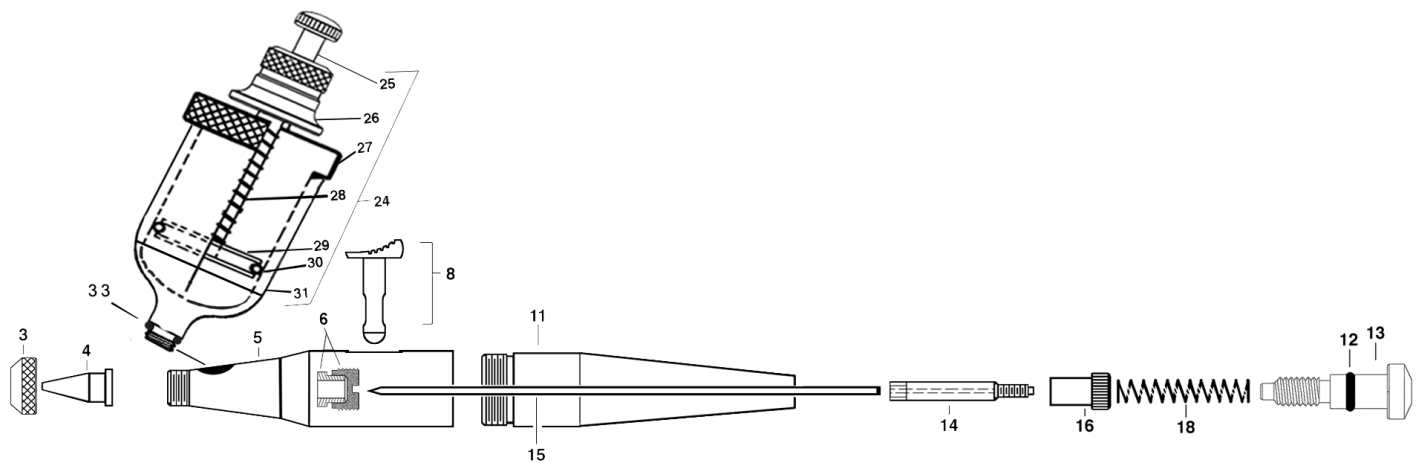
4311 North Normandy Avenue

Chicago, IL 60634-1395

Phone: 773-867-9191 • Fax: 773-867-9198

Website: paascheairbrush.com

E-Mail: info@paascheairbrush.com



FP-4P FLOW PENCIL (WITH EXTRA NIBS: LN-1/64, 3/64 AND 1/16)

Nibs are grooved as follows:

LN-1/64 has one (1) groove

LN-1/32 has two (2) grooves

LN-3/64 has three (3) grooves

LN-1/16 has four (4) grooves

<u>No.</u>	<u>Part No.</u>	<u>Description</u>	<u>No.</u>	<u>Part No.</u>	<u>Description</u>
3	MU-9	Tip Nut	16	VL-141	Locknut
4	LN-1/32	Nib (1/64, 3/64 & 1/16 Sizes)	18	VL-140	Spring
5	MU-48A	Shell Assembly	32	MU-77	Stand
6	MU-612	PTFE Packing & Packing Nut	24	*FP-45	Pressure Cup Assembly
8	MU-65	Finger Lever Assembly			(new male thread)
11	MU-71	Handle	25	*MU-25	Rod & Cap Assembly
12	3A-4	"O" Ring	26	*MU-69	Nut
13	MU-72	Adjusting Screw	27	*FP-5	Cover (only)
14	MU-57	Needle Chuck	28	*MU-26	Spring
15	MU-49L	Needle	29	*FP-9	Piston
			30	*FP-8	"O" Ring
			31	*FP-6	Cup (only) Aluminum
			33	*AE-43	"O" Ring

Contains Aluminum

Contains Brass, Nickel Plated

Contains Stainless Steel

Contains FDA Approved Silicone